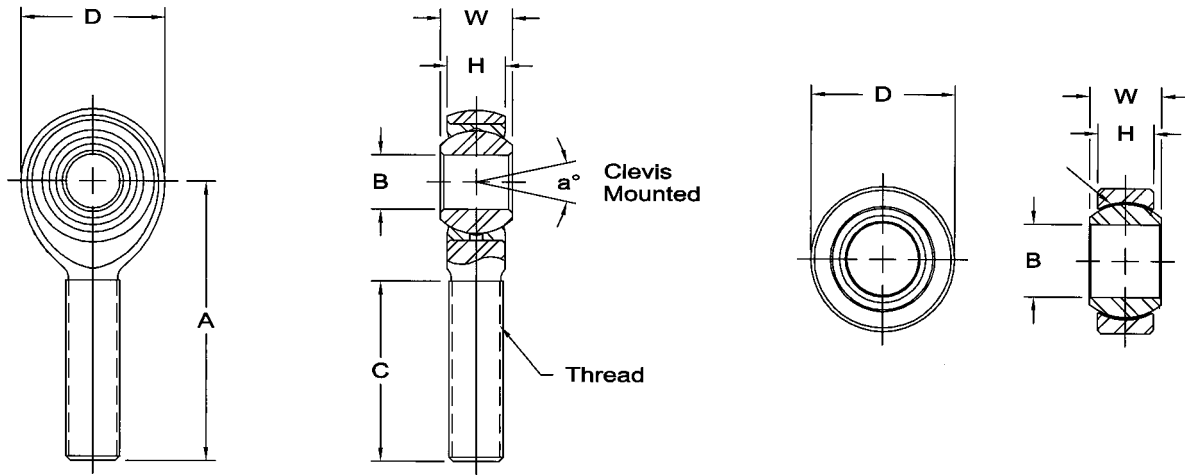


Special Size Rod Ends and Spherical Bearings for Race Car Applications

These special bearings are designed for specific race car applications. In most cases, the bearing was either custom-designed to a chassis manufacturer's specifications, or the rod end was designed to be a replacement for an existing design.

If the bearing is a duplicate of an existing part, the "common" part number is shown in the table. All of these rod ends have a self-lubricating PTFE liner bonded to the inside of the race.



Aurora Special Size Rod Ends and Spherical Bearings for Racing Applications									
Common Part No.*	Aurora Part No.	B Bore ID	Thread	A Center of Bore to End of Shank	W Ball Width	H Head or Race Thickness	D Head or Race OD	Notes	Pegasus Part No.
RC04	AM-4T-9	1/4"	5/16-24	1 9/16"	5/16"	9/32"	3/4"	Van Diemen steering rack	3065TSH-4-R
2057P*	AM-6T-6	3/8"	1/2-20	1 15/16"	1/2"	13/32"	1"	Small head, 9544 lb radial strength	3063-6-8-L* or -R
1865P*	AM-6T-15	3/8"	1/2-20	2 7/16"	5/8"	1/2"	1 5/16"	16,238 lb radial strength	3069-6-15-L* or -R
	HXAM-8T-8	1/2"	1/2-20	2 5/8"	15/16"	0.411"	1 9/16"	High misalignment	AB-HXAM-8T-8-L or -R
	COM-8T-24	1/2"			16mm	9mm	26mm	Bilstein struts	3076-001
RBJ 205L	COM-8T-33	1/2"			7/16"	5/16"	15/16"	HT race, 19,680 lb radial strength	3076-002
RWR08D/E	PWB-8T-3	1/2"			3/4"	1/2"	1 1/8"	Van Diemen, Ralt	3075-8
1234P** / 21CNZ081	COM-8T-7	1/2"			7/16"	3/8"	7/8"	HT race, 19,680 lb radial strength	3073-8
LS10 / RS10	LCOM-10T	5/8"			7/8"	1 1/16"	1 9/16"		3073-10
2280P	COM-10T-18	5/8"			7/8"	0.630"	1 3/8"	Crosslè	3074-10

* The original rod end had right-hand threads only, but we offer left-hand as well.

** The 1234P bearing had a much weaker race and lower radial strength rating than the 21CNZ081 and our replacement.

Aurora Rod End Bearings

Aurora Spherical Bearings

Suspension Technical Documents



Pegasus Auto Racing Supplies
2475 S 179th St
New Berlin, WI 53146

1-800-688-6946 / 262-317-1234
1-262-317-1201 (fax)
www.PegasusAutoRacing.com